



TIBOR

ORIGINAL SINCE 1946

forbo

FLOORING SYSTEMS



Forbo & Flotex

At Forbo Flooring Systems, we are passionate about floorcovering. We supply sustainable floorcoverings for each area of an interior, from the entrance to circulation and communal zones. Forbo Flooring Systems can deliver integrated solutions for every project. Flotex offers a new dimension in flooring as it combines all the hard-wearing and durable characteristics of a resilient floor with the warmth and comfort of carpet. Slip resistant, sound absorbent and easy to clean, it is digitally printed in an infinite number of colours and designs, from abstracts to 3D patterns and trompe l'oeil effects.

Forbo Flotex & Tibor

Forbo Flooring Systems have now teamed up with British design legend Tibor on an exciting new range for Flotex. Pioneering textile designer Tibor Reich – creator of Tibor - was a man ahead of his time. Although these striking patterns date from the 1950s, they could have been designed yesterday.

A bold innovator, Tibor received many important commissions, including textiles for the young Queen Elizabeth II and the Festival of Britain, and later for Concorde and the QEII. Renowned for his Deep Texture weaves, which were widely adopted by leading furniture manufacturers, such as G-Plan and Ercol, Tibor also excelled at printed fabrics, notably the highly-acclaimed Fotexur range. A multi faceted artist, he also designed carpets, wallpapers, ceramics, tiles and vinyl flooring, all in his distinctive co-ordinated style.

Had he been alive today, Tibor would have relished working with Forbo. Thankfully his creativity lives on through his internationally recognized archives, housed at the Victoria & Albert Museum and University of Leeds International Textile Archive. Flotex provides the perfect medium for Tibor's dynamic graphic designs. The cutting-edge technology of digital printing gives a new lease of life to his arresting patterns.

ZIGGURAT

Through focusing on texture and line, Tibor's detailed photograph of straw inspired this famous pattern from the Fotexur range. The photograph was taken in the spring sunshine to give the image greater definition and the design deliberately highlights the tonal contrast between light and dark. Co-ordinating broad stripes available in two colourways.



980204 raspberry



980203 rust



980207 marigold



980209 autumn stripe



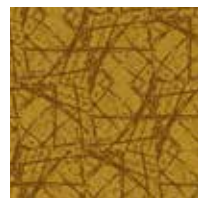
980208 marine



980206 aqua



980202 teal



980211 saffron



980210 taupe



980212 grey stripe



980205 gunmetal



980201 lead

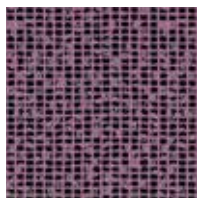




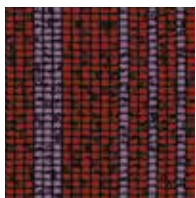
980209 autumn stripe

MOSAIC

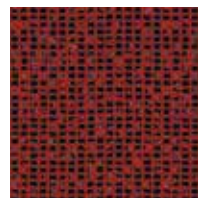
Tibor often incorporated richly-textured 'fancy yarns' into his weaves to create tactile effects. For this pattern Tibor photographed a sheer fabric made from slub yarn. The uniformity of the grid contrasts pleasingly with the randomness of the loops. Co-ordinating stripes available in two colourways.



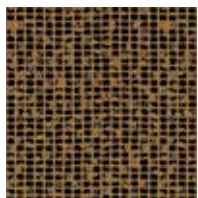
980403 raspberry



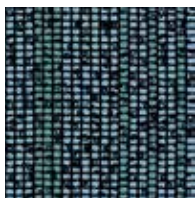
980412 raspberry stripe



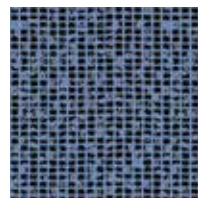
980407 tomato



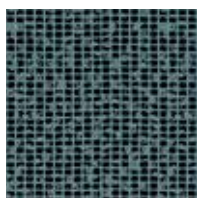
980410 saffron



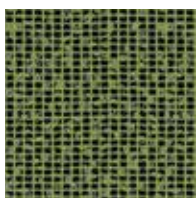
980411 marine stripe



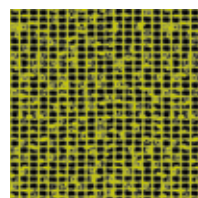
980402 cornflower



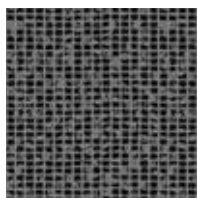
980406 aqua



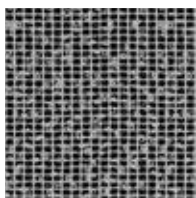
980404 lime



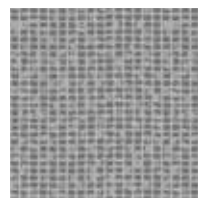
980409 citron



980401 pewter



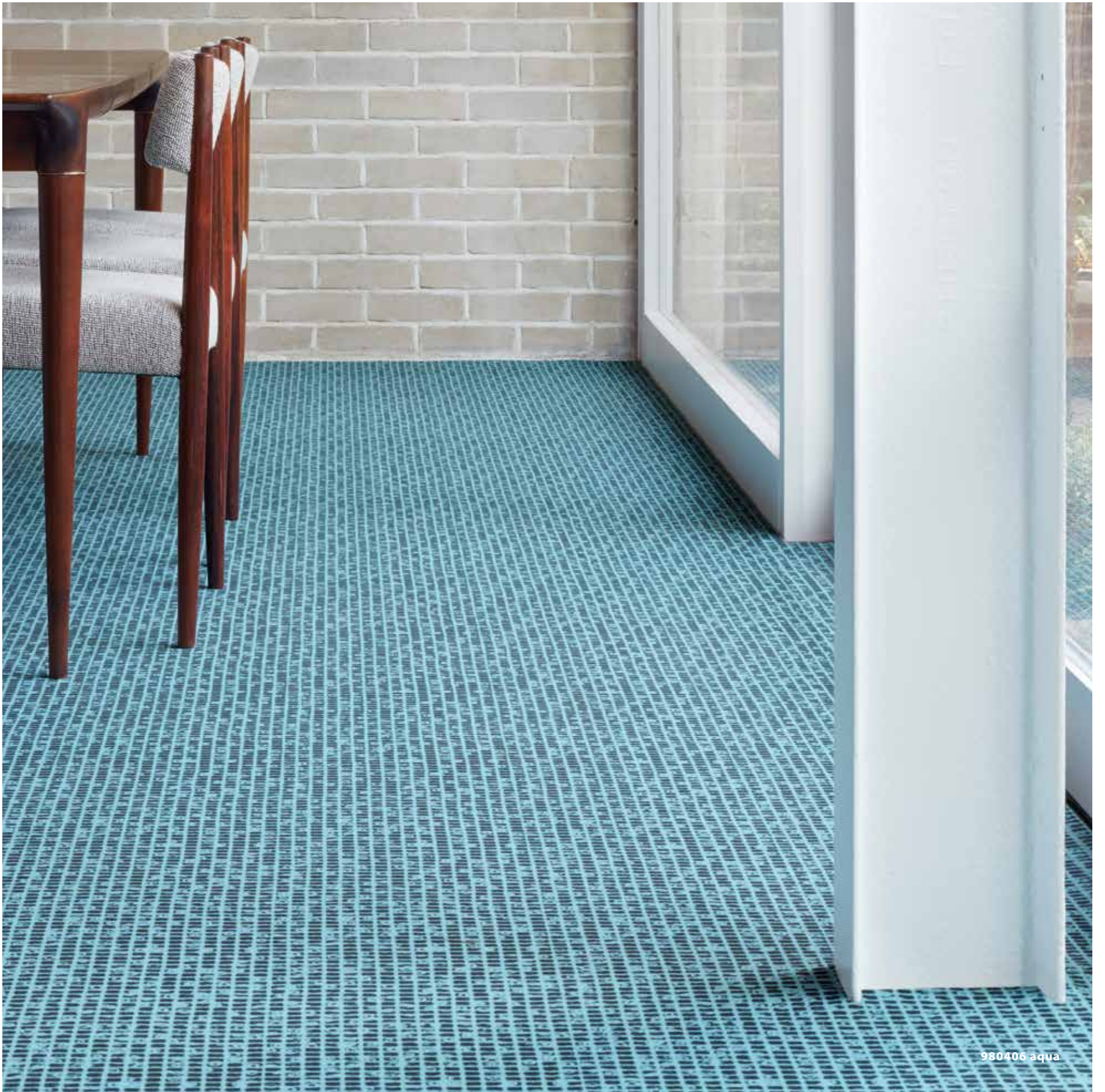
980405 monochrome



980408 stone



980406 aqua | 980411 marine stripe



980406 aqua



980101 black

QUARTZ

The natural world provided a great source of inspiration for Tibor and he photographed it extensively. This pattern depicts the granular composition of rocks and pebbles.



980106 cornflower



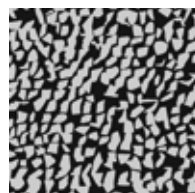
980105 orange



980103 saffron



980102 camel



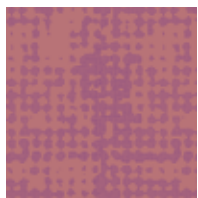
980101 black



980104 white

TESSELLO

This ingenious Tibor pattern has two distinct layers: a fine mesh in the background, overlaid with a fragmented larger scale-grid. Structured yet informal, its subtle textures create a highly effective low-key flooring design.



980308 fuschia



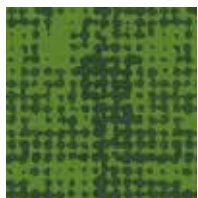
980304 tomato



980306 marine



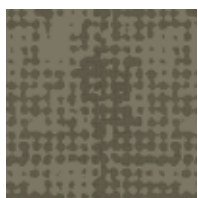
980302 aqua



980303 lime



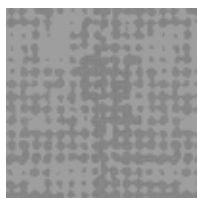
980307 saffron



980310 taupe



980301 pewter



980309 stone

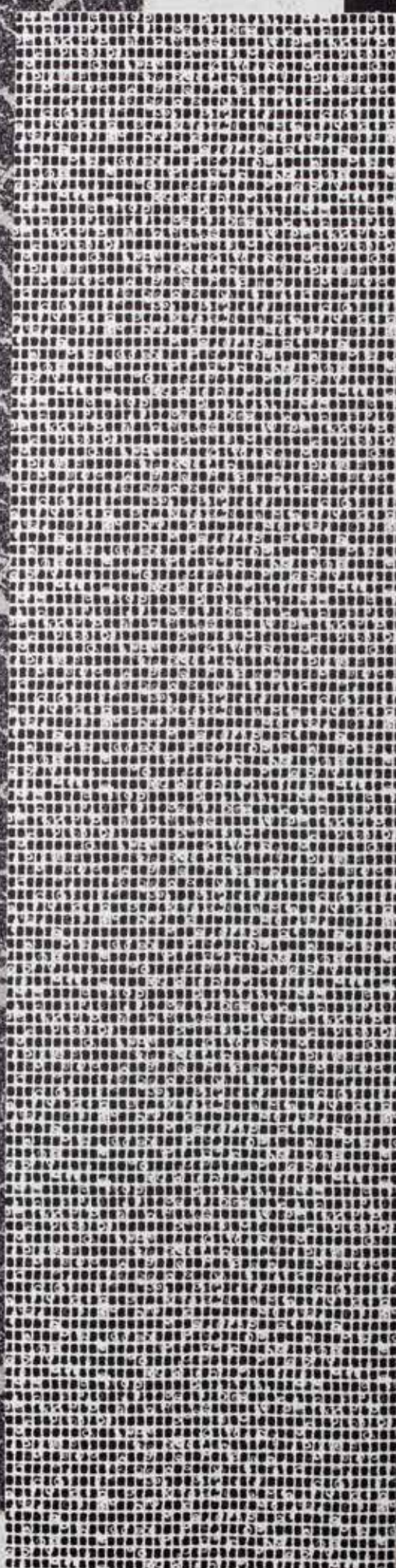
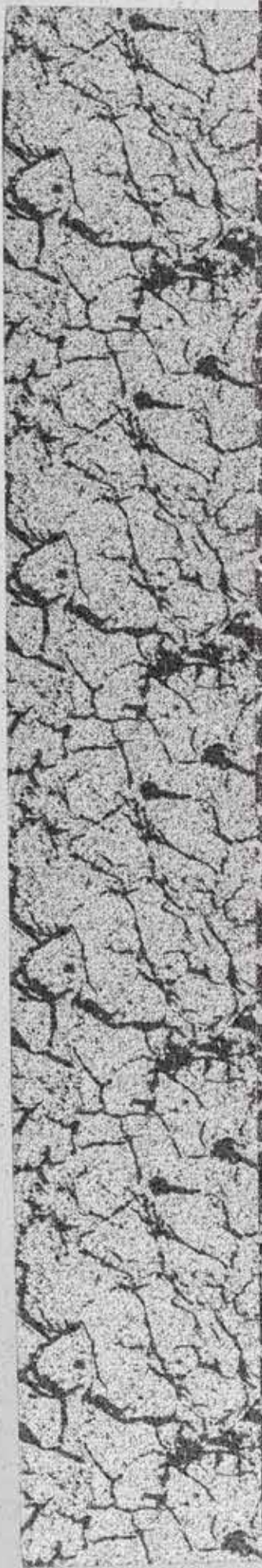


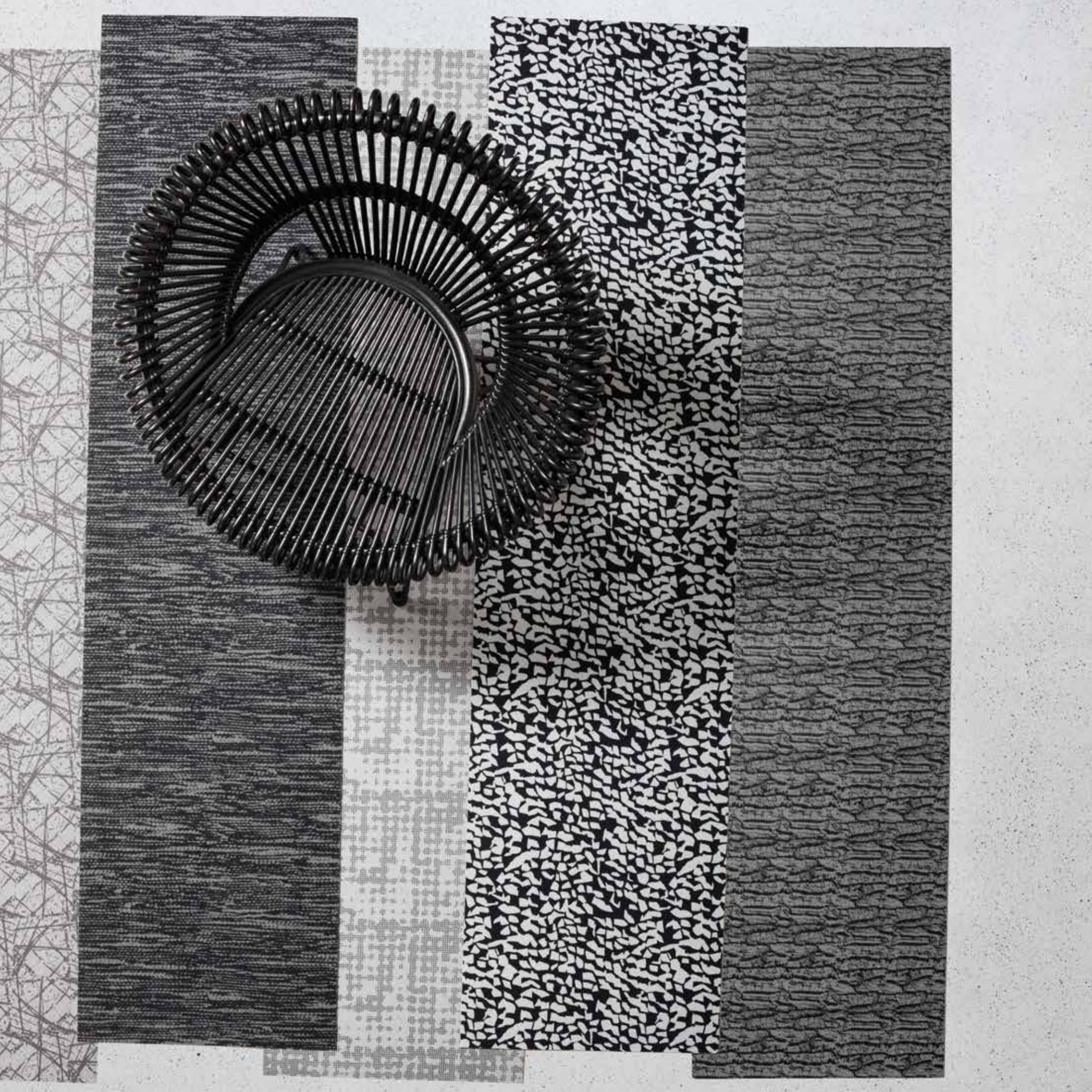
980305 ice





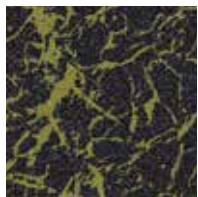
980309 stone





ONYX

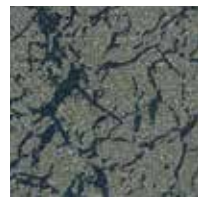
Although this pattern resembles marble, it was actually inspired by a photograph of cracked mud in the riverbed next to Tibor's Clifford Mill. One of his most famous Fotexur designs, it was originally used for a woven carpet called Padua, so it is particularly apt that it is now being used for decorative flooring once again. The majority of colourways work in pairs as positive and negative variations.



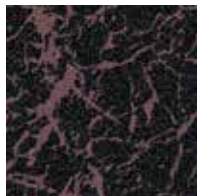
980701 lime



980712 clay



980710 moss



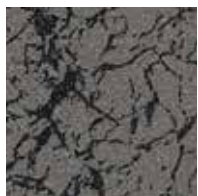
980707 mauve



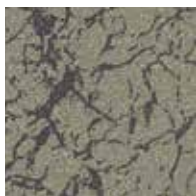
980706 honey



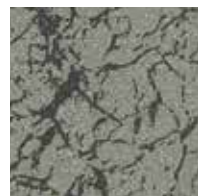
980704 marine



980708 smoke



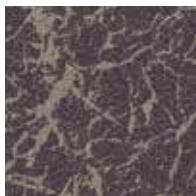
980711 taupe



980709 stone



980702 pewter



980705 heather



980703 grey





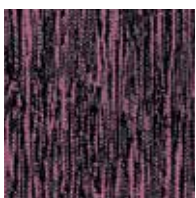
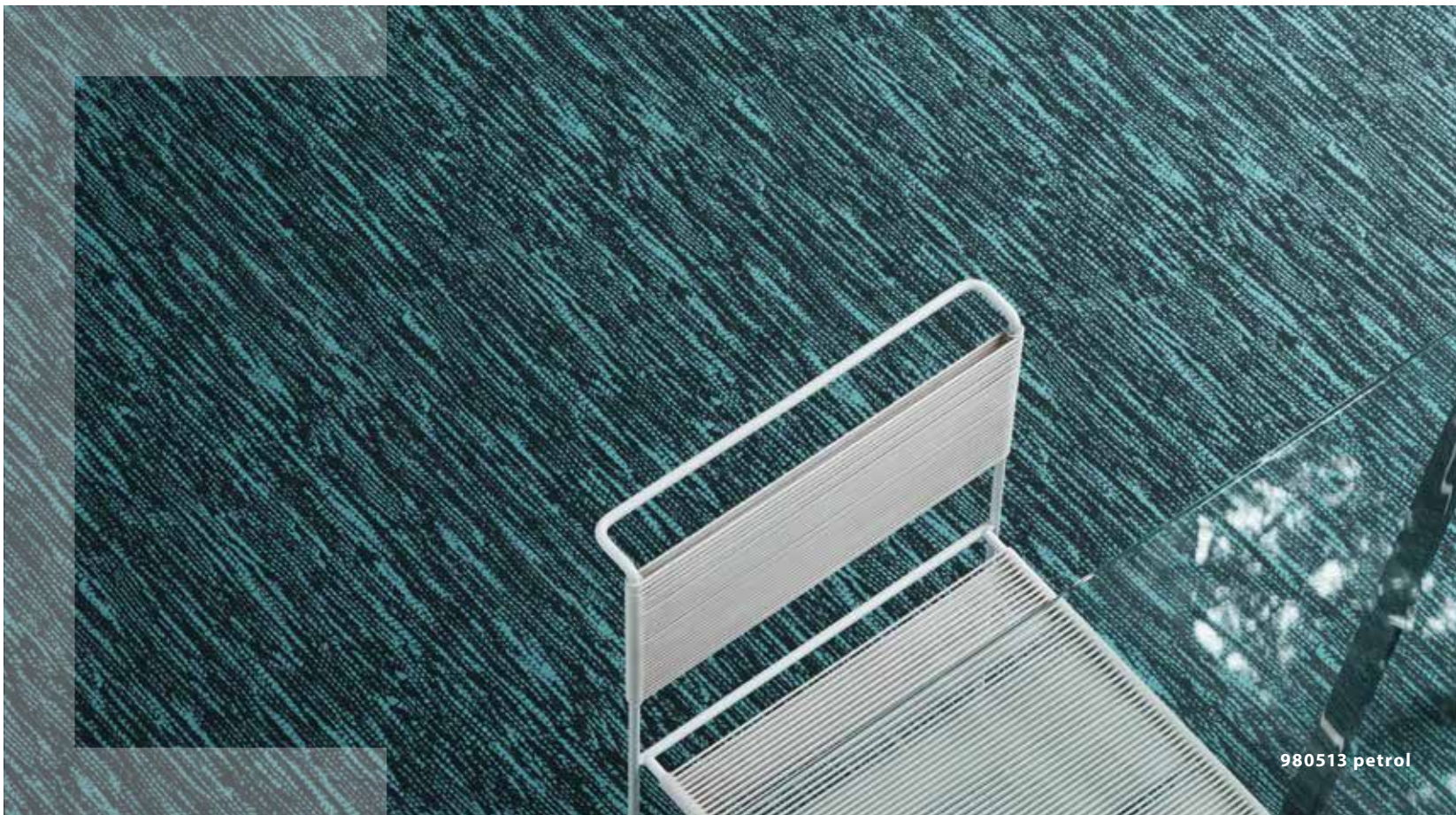
980702 pewter



980504 flame

TWEEDY

Tibor was unusual as a textile designer in creating both printed and woven fabrics. This pattern was inspired by a photograph of one of his celebrated Deep Texture weaves, in which irregular slubby yarns were used to create tactile fabrics with textural variety and depth.



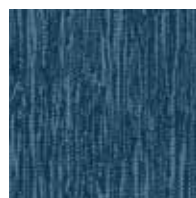
980512 raspberry



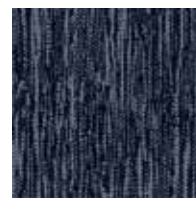
980504 flame



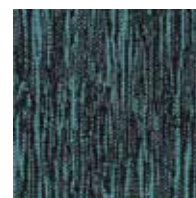
980509 orange



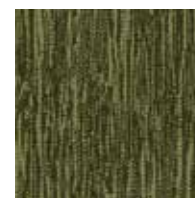
980503 aqua



980502 marine



980513 petrol



980508 lime



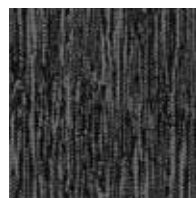
980514 citron



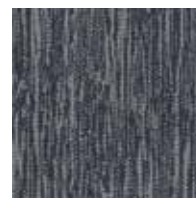
980510 clay



980505 coffee



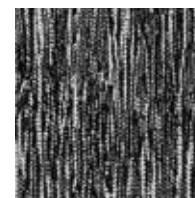
980501 pewter



980507 grey



980506 stone



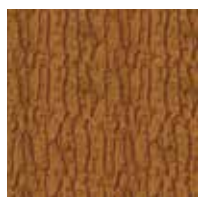
980511 monochrome

ARBOR

Like all Tibor's Fotexur patterns, the starting point for this design was a crisp black and white photograph taken by the designer himself. The image, recording the rough striated bark of an oak tree, is ruggedly textural, providing the perfect foil for varied coloured overlays.



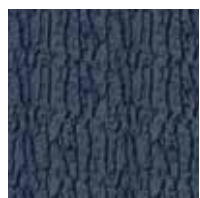
980604 purple



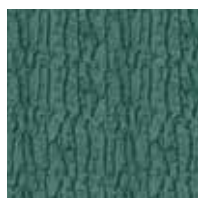
980608 marigold



980610 cornflower



980602 marine



980606 aqua



980603 moss



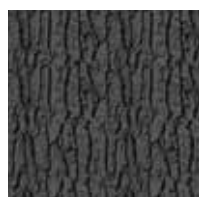
980612 saffron



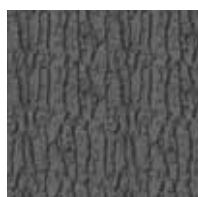
980611 taupe



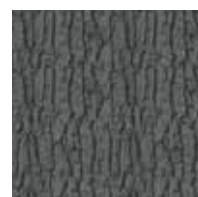
980607 clay



980601 pewter



980605 grey



980609 stone



980610 cornflower



980610 cornflower



980803 monochrome



ATOMIC

This design, derived from a photograph of an atomic structure, symbolises the period known as the Atomic Age. Part of the Colatomic range, launched in 1960, it reflects Tibor's dual interests in colour and texture. It also reflects the impact of Abstract Expressionism, which was very popular in the art world at the time.



980801 raspberry



980804 aqua



980802 saffron



980803 monochrome

Flotex Technical Information

- Hard-wearing, heavy-duty flooring material suitable for a wide range of contract uses.
- Combines the durability and resilience of hard flooring with the warmth and comfort of textile floor covering.
- 70 million fibres per m² provide a slip-resistant surface in both wet and dry conditions.
- Density of fibres make Flotex sound absorbent, resulting in a quiet flooring material.
- Flotex is an Allergy UK approved floor covering: the fibres trap allergens until easily releasing them on vacuuming.
- Digital printing offers innumerable design options and intricate colour combinations across the colour spectrum.
- Digital printing is ideal for detailed designs and complex visual effects that are difficult to achieve through conventional print.

Technical specifications

Flotex Tibor sheet meets the requirements of EN 1307

	Total thickness	ISO 1765	4.3 mm
	Commercial use	EN 685	Class 33 heavy
	Roll width		2.0 m
	Roll length		30 m
	Total weight	ISO 8543	1.8 kg/m ²
	Dimensional stability	ISO 2551 / EN 986	< 0.2%
	Abrasion resistance	EN 1307 annex F	> 1000 cycles
	Castor chair continuous use	EN 985	r = ≥2.4 continuous use
	Light fastness	EN ISO 105-B02	≥ 6
	Slip resistance	UK SRG pendulum	Dry – very low slip risk Wet – low slip risk
	Acoustical	EN-ISO 717-2	Impact sound ΔLw = 20 dB
		ISO 354	Sound absorption = 0.10
	Water tightness	EN 1307 annex G	Pass
	Creating better environments		
	Renewable electricity	Flotex is manufactured using 100% electricity made from renewable sources	
	Recycled content	Flotex sheet contains approximately 22% recycled content by weight	
	Back to the Floor	Installation off cuts can be collected and recycled via Back to the Floor	
	Ska	Flotex meets the Ska Rating criteria for M12 soft floor coverings in both office and retail schemes	
	LCA	LCA is a foundation for securing the lowest environmental impact	

Flotex meets the requirements of EN 14041

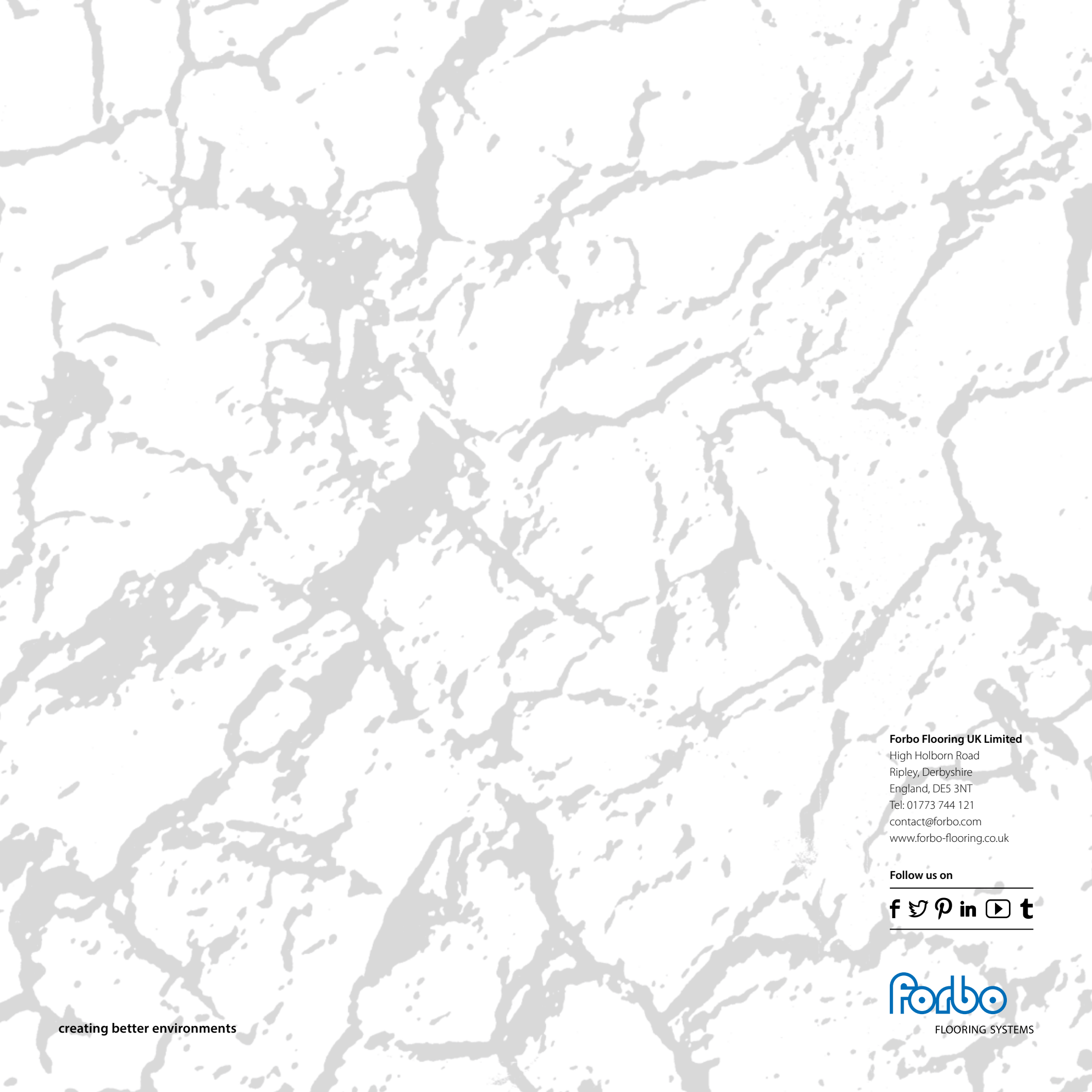
CE
EN 14041

	Reaction to fire	EN 13501	B _{f1} s1
	Slip resistance	EN 13893	DS: ≥ 0.30
	Body voltage	ISO 6356	< 2 kV
	Thermal conductivity	ISO 8302	0.048 m ² K/W

BREEAM specific ratings for product ranges

Product description	Building Type Commercial	Education	Health	Domestic	Retail (Durability)	Retail (Fashion)
Flotex F200 HD sheet with PVC backing	A	A	A	B	A	A+





Forbo Flooring UK Limited

High Holborn Road
Ripley, Derbyshire
England, DE5 3NT
Tel: 01773 744 121
contact@forbo.com
www.forbo-flooring.co.uk

Follow us on



creating better environments

